

HETEROGENEOUS

Wood

Wood



White Pine **9834** w/r 9834 LRV 57



Painted Chevron **9828** w/r 9828 LRV 43



English Oak **9823** w/r 9823 LRV 24



Golden Pine **9838** w/r 9838 LRV 25



Honey Beige **9869** NCS S 3005-Y50R w/r 9869 LRV 29



Silver Oak **9826** w/r 9826 LRV 28



Grey Weathered Chevron **9829** w/r 9829 LRV 26



Reclaimed Chevron **9830** w/r 9830 LRV 17



Bronzed Pine **9835** w/r 9835 LRV 14



Autumn Rain **9864** NCS S 5005-Y80R w/r 9864 LRV 24



Auburn **9863** NCS S 5020-Y30R w/r 9863 LRV 17



Sun Bleached Oak **9825** w/r 9825 LRV 31



Classic Limed Ash **9833** w/r 9833 LRV 49



Honey Oak **9821** w/r 9821 LRV 22



Smoked Oak **9827** w/r 9827 LRV 11



Espresso **9867** NCS S 7005-Y80R w/r 9867 LRV 10



Warm Limed Ash **9832** w/r 9832 LRV 34



Blond Pine **9839** w/r 9839 LRV 37



Toasted Oak **9822** w/r 9822 LRV 18



Silvered Pine **9836** w/r 9836 LRV 17



Firelight **9868** NCS S 5020-Y40R w/r 9868 LRV 16



Night Sky **9865** NCS S 7000-N w/r 9865 LRV 13



Roasted Limed Ash **9831** w/r 9831 LRV 27



Blond Oak **9820** w/r 9820 LRV 28



Aged Oak **9824** w/r 9824 LRV 8



Charcoal Pine **9837** w/r 9837 LRV 13



Raven **9866** NCS S 7502-R w/r 9866 LRV 12

EXPONA® FLOW

Concrete

HETEROGENEOUS



Light Grey Concrete **9858**
NCS S 3000-N

w/r 9858
LRV 40



Warm Concrete **9855**
NCS S 3502-R

w/r 9855
LRV 25



Cool Concrete **9856**
NCS S 4500-N

w/r 9856
LRV 22



Dark Grey Concrete **9857**
NCS S 6502-R

w/r 9857
LRV 13



Light Industrial Concrete **9860**
NCS S 2500-N

w/r 9860
LRV 35



Dark Industrial Concrete **9859**
NCS S 4502-R

w/r 9859
LRV 24



Copper Ornamental **9861**
NCS S 5502-R

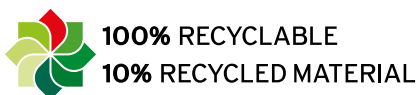
w/r 9861
LRV 19



Onyx Ornamental **9862**
NCS S 7000-N

w/r 9862
LRV 11

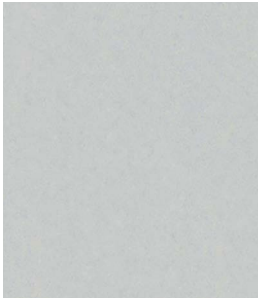
Variation in colour and design is a feature of this product intended to enhance the natural appearance of the floor.
w/r = weld rod NCS = Natural Colour System LRV = Light Reflectance Value



*Refer to BRE Global ratings on www.greenbooklive.com

Cosmos

HETEROGENEOUS



Luna **9844**
NCS S 1502-B w/r 9844
LRV 48



Storm **9845**
NCS S 3502-B w/r 9845
LRV 26



Oatmeal **9840**
NCS S 2005-G90Y w/r 9840
LRV 43



Moleskin **9841**
NCS S 3005-Y20R w/r 9841
LRV 28



Steel Blue **9852**
NCS S 6020-B10G w/r 9852
LRV 10



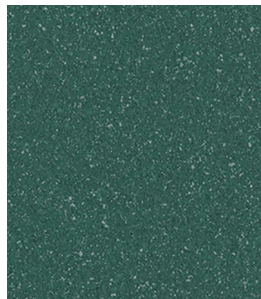
Midnight **9854**
NCS S 7005-R80B w/r 9854
LRV 10



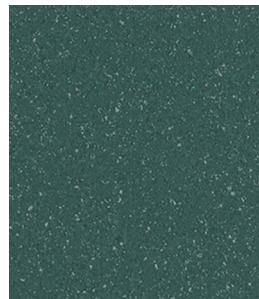
Taupe **9843**
NCS S 7502-Y w/r 9843
LRV 10



Meadow **9850**
NCS S 2050-G90Y w/r 9850
LRV 32



Teal **9851**
NCS S 6020-B70G w/r 9851
LRV 11



Woodland **9853**
NCS S 6020-B50G w/r 9853
LRV 11



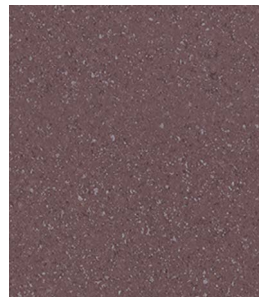
Jet **9842**
NCS S 8000-N w/r 9842
LRV 8



Flaxen **9849**
NCS S 0560-Y w/r 9849
LRV 44



Burnt Orange **9848**
NCS S 3040-Y40R w/r 9848
LRV 24



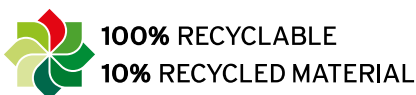
Mulberry **9846**
NCS S 6010-R30B w/r 9846
LRV 13



Plum **9847**
NCS S 6020-R10B w/r 9847
LRV 9

Variation in colour and design is a feature of this product intended to enhance the natural appearance of the floor.

w/r = weld rod NCS = Natural Colour System LRV = Light Reflectance Value



*Refer to BRE Global ratings on www.greenbooklive.com